



NEWS FROM SHARSHERET
NATIONAL FAMILY CAREGIVER MONTH UPDATE
NOVEMBER 2025



When Sam was diagnosed with stage IV breast cancer at just 28, her sister Tori became her constant caregiver—by her side through every chemo session, scan, and sleepless night. Years later, when Tori faced her own breast cancer diagnosis, Sam stood by her in return.

With Sharsheret’s support, they found comfort, community, and hope through every stage of the journey. Their story is a powerful reminder that caregiving, sisterhood, and early detection can change everything.

[Read Sam and Tori's Story](#)

News & Notes

[Request Your Free Caregiver Kit Today](#)

Learning about a loved one’s cancer diagnosis can trigger lots of questions, overwhelming feelings, and a surge of emotions. Our Spungen Foundation Family Focus® Kit offers valuable caregiving tips and resources to help you navigate this journey.



The Kits are sponsored in part by Florence and Laurence Spungen Family Foundation, and the Heimann, Polis, and Sacks Families in memory of Manfred Heimann.

[Order a Caregiver Kit](#)

[Connect with a Social Worker](#)



Webinar on 11/24: A MEN'S Guide to Cancer Risk Reduction

Join Sharsheret for our annual Movember webinar on men's health and hereditary cancer risk. Learn how hereditary factors impact men and the cancers of greatest concern, including pancreatic, prostate, melanoma, colon, and male breast cancer. Our expert panel will discuss risk-reducing strategies, from genetic testing and cancer screenings to healthy lifestyle choices that support better outcomes.

This webinar is sponsored by [AstraZeneca](#), [Ambry](#), [The Basser Center for BRCA](#), Max and Anna Baran, Ben and Sarah Baran and Milton Baran Endowment Fund of the Jewish Community Foundation of Los Angeles, and Cooperative Agreement 24-0061 of the Centers for Disease Control and Prevention.

[Register Here](#)



Webinar on 11/17: Navigating Caregiving Rights and Resources

Join Sharsheret and Joanna Fawzy Doran, of Triage Cancer, for an informative webinar on the rights and resources available to those caring for a loved one with cancer. Learn about key legal protections and practical tools to help navigate the challenges of caregiving.

[Register Here](#)

Sharsheret Co-Authors a New Study

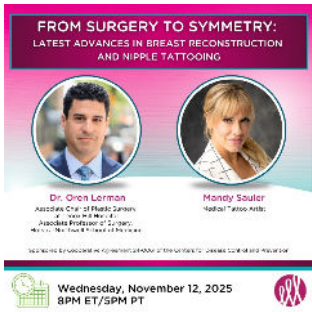
Sharsheret, in collaboration with Lombardi Comprehensive Cancer Center, co-authored a new article in the Journal of Genetic Counseling exploring how community-based peer support and genetic education empower Ashkenazi Jewish women at risk for or living with breast cancer. The study



reinforces the impact of culturally responsive care and informed decision-making in cancer risk management.

This work was conducted in collaboration between Sharsheret and Lombardi Comprehensive Cancer Center under cooperative agreements U58DP005408 and U58DP007915 and funded by the Centers for Disease Control and Prevention.

[Read More](#)



Webinar on 11/12: Advances in Breast Reconstruction and Nipple Tattooing

This program offers patients, and those considering prophylactic surgery, up-to-date information on the latest advances in breast reconstruction, including resensation techniques, sixth-generation breast implants, natural tissue reconstruction, and revision procedures to improve both comfort and aesthetics.

This webinar is sponsored by Cooperative Agreement 24-0061 of the Centers for Disease Control and Prevention.

[Register Here](#)



Thanksgiving Is Coming: We Can Help With Dessert!

The Pies for Prevention bake sale is now open across the country!

Launched in 2008 by sisters Adeena Sussman and Sharon Wieder in memory of their mother and grandmother, both lost to ovarian cancer, Pies for Prevention raises funds and awareness in the days leading up to Thanksgiving. Proceeds support the Stephanie Sussman and Ann Nadrich Memorial Jewel and Sharsheret's Ovarian Cancer Program.

By purchasing a pie, you're helping raise vital funds for women and families facing ovarian cancer. As you gather with loved ones this Thanksgiving, take the opportunity to spark meaningful conversations about women's health, early detection, and genetic awareness. Every pie is accompanied by life-saving cancer educational resources.

Want to get involved as a baker? Contact [Talia Lerner](#) to get started.





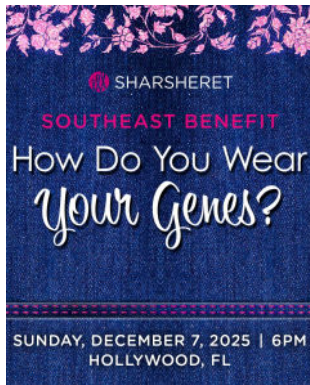
Don't Miss The NYC Benefit

Please join us on Tuesday, November 18th for a special evening on New York City's Upper East Side hosted by Sharsheret board member and best-selling cookbook author Kim Kushner.

Enjoy cocktails, music, and the first-ever Sharsheret fine jewelry auction as we honor Dr. Ruth Oratz and Leah Weinberg for their incredible dedication and impact.

The NYC Benefit is sponsored by Bloomberg Philanthropies, Pfizer, Chemo Mouthpiece, American Jewish Medical Association, Medical Imaging of Manhattan, LLC, Murray Hill Radiology and Mammography, and NYU Langone Health Permuter Cancer Center.

[Register Here](#)



Register Today for The Southeast Benefit

Don't miss Sharsheret's Annual Southeast Benefit in South Florida on Sunday, December 7th!

Join us for an unforgettable evening of community, celebration, and impact as we honor Dr. Jessica Baitner, Dr. Starr Mautner, and Abby Brody for their remarkable dedication and impact on their communities.

[Register Here](#)

Breast Cancer Awareness Month Media



[Jewish Women Struggling With Early Menopause Due to Cancer Treatment Find New Help](#)

[What Every Jewish Family Needs to Know](#)



[Jordanna's Story, Part 1](#)
[Jordanna's Story, Part 2](#)

[Click here](#) to read Sharsheret's latest media coverage.

Sponsored Content



Discover Pathlight™ - a novel molecular residual disease (MRD) test designed to help you, and your care team monitor early-stage breast cancer with greater confidence. Pathlight uses a unique “molecular fingerprinting” approach, personalized to your tumor, to detect even the tiniest fragments of circulating tumor DNA (ctDNA)—or confirm when none are present¹ Covered by Medicare, Pathlight has been shown in a recent study to detect signs of recurrence an average of 13.7 months earlier than standard methods and can also show how your cancer is responding to treatment over time. [Learn more.](#)



MammaPrint® + BluePrint® biomarker testing work together to illuminate tumor biology, giving women with early-stage breast cancer and their care teams deeper insight into how their tumor behaves. These results can open the door to more personalized treatment paths. Talk to your provider today to see if these tests may be right for you.

Summit Virtual Exhibit Corner



Click [here](#) to view the exhibit booths of our Summit Sponsors, which includes resources from [AstraZeneca](#), [Merck](#), [Novartis](#), and [Pfizer](#).



Looking for support?

Call 866.474.2774 or email info@sharsheret.org.



©2025 Sharsheret, a 501(c)3 charitable organization. Sharsheret is a national not-for-profit cancer support, education, and financial assistance organization and does not provide any medical advice or perform any medical procedures. Sharsheret does not endorse or promote any specific medication, treatment, product or service, and makes no guarantees regarding the effectiveness of any product discussed herein. Any information provided herein is not a substitute for professional medical advice or treatment. You should always seek the advice of your physician or other qualified health provider.

[Privacy Policy](#) | [Terms of Use](#) | [Financials](#)



Sharsheret | 10 East 40th Street 28th Floor | New York, NY 10016 US

[Unsubscribe](#) | [Update Profile](#) | [Constant Contact Data Notice](#)