

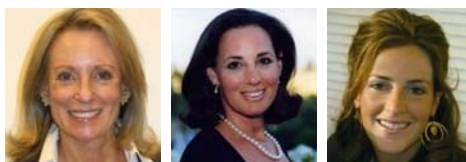
To view this email as a web page, click [here](#).

April 2009

[www.sharsheret.org](http://www.sharsheret.org)



## Reserve Your Seat For Sharsheret's Annual Benefit Luncheon Today



Reserve your seat now for Sharsheret's **Annual Benefit Luncheon, Sunday, May 17, 2009** at the Marriott at Glenpointe in Teaneck, New Jersey.

Share this special day with friends and loved ones as we recognize the meaningful contributions of (pictured left to right) **Rochelle Hirsch** (New York City) and **Naava Parker** (Englewood, New Jersey), Guests of Honor, and **Suffy Rudman** (Riverdale, New York), recipient of the Lisa Altman Volunteer Tribute Award.

The Benefit Luncheon will feature a Silent Auction with fabulous items, including exclusive diamond jewelry, iPods, and artwork.

**For seat reservations and contributions, please go to <https://www.sharsheret.org/benefit.php>.** For more information about the Benefit and sponsorship opportunities, please e-mail [events@sharsheret.org](mailto:events@sharsheret.org) or call toll-free (866) 474-2774.

## "Take It From Me" Teleconference Transcript Now Available

You can now download a free written transcript of Sharsheret's national teleconference, **Take It From Me: My Experiences In My Own Words**, presented on March 3, 2009. Panelists Linda Blachman, MPH, MA (Personal Historian, Author, and Founder, Mothers' Living Stories Project), Janet Ruth Falon, MLA (Creative Writing Teacher, University of Pennsylvania), Jill Cohen, Blogger (Dancing With Cancer: Living With Mets, a "New Normal"), and Shera Dubitsky, MEd, MA (Clinical Supervisor, Sharsheret) presented various ways in which women can record their personal breast cancer experiences.

To download the teleconference transcript, go to <http://www.sharsheret.org/library/MyExperienceInMyOwnWords.pdf>.

## Genetics For Life Program Educates Healthcare Professionals Worldwide

Genetics Program Coordinator Niecee Schonberger, MS, CGC brought Genetics for Life to the **American College of Medical Genetics** annual conference in Tampa, Florida. The American College of Medical Genetics conference welcomed nearly 1,700 medical geneticists, genetic counselors, and researchers in genetics from the United States, Canada, Europe, and Asia. At the

## In This Issue

[Reserve Your Seat For Sharsheret's Annual Benefit Luncheon Today](#)

["Take It From Me" Teleconference Transcript Now Available](#)

[Genetics For Life Program Educates Healthcare Professionals Worldwide](#)

[Read About "The Early Act" Legislation On Sharsheret's Blog](#)

[New Sharsheret Publications](#)

[Sharsheret Support Groups](#)

[Get Connected During National Volunteer Month](#)

[Bat/Bar Mitzvah Program](#)

[Sharsheret On Campus](#)

[Sharsheret In The Healthcare Community](#)

[Sharsheret In The Jewish Community](#)

[Outreach Events](#)

[Sharsheret In The News](#)

[Support Sharsheret](#)

## Quick Links

[Luncheon Seat Reservations](#)

[Donate Now!](#)

[Shop for Sharsheret](#)

[Upcoming Events](#)

conference, Ms. Schonberger educated the clinical genetics community about Sharsheret and the unique concerns of young Jewish women facing breast cancer.

Sharsheret was also chosen to present an abstract highlighting the unique genetic issues of Jewish women of Ashkenazi descent at the **International Conference on Psychosocial Aspects of Genetic Testing for Hereditary Cancer** in Toronto, Canada.

Sharsheret's **Genetics for Life** program provides materials and resources to address the concerns of hereditary breast cancer, including the *Breast Cancer Genetics and the Jewish Woman* resource booklet, the Genetic Counselor Hotline, and medical symposia.

For more information about Genetics for Life, please e-mail [info@sharsheret.org](mailto:info@sharsheret.org) or call toll-free (866) 474-2774.

## Read About "The Early Act" Legislation On Sharsheret's Blog



Visit Sharsheret's new **Blog** at [www.sharsheret.blogspot.com](http://www.sharsheret.blogspot.com) and read about National Advisory Board member Nira Berry's experience as a Sharsheret representative in Washington, DC. Ms. Berry (pictured left with Congresswoman Wasserman Schultz) attended Congresswoman Debbie Wasserman Schultz's (FL) presentation introducing "The Early Act," a bill proposing nationwide early detection, early education, and early information as well as grants for organizations that support young breast cancer survivors.

To post your personal story on the Blog and provide inspiration to others, please e-mail [info@sharsheret.org](mailto:info@sharsheret.org).

## New Sharsheret Publications



The newest booklet in Sharsheret's Resource Series, **A Guide for Mikvah Attendants**, has been mailed to hundreds of Mikvah attendants across the country. The *Guide* will educate Mikvah attendants about the concerns of women living with breast cancer as they prepare for the Mikvah.

The Sharsheret **Breast Cancer Navigation Flowchart** is a new resource to help women newly diagnosed with breast cancer understand their pathology reports and can be used as a springboard for questions as they consider their treatment options. The Navigation Flowchart is available to women newly diagnosed with breast cancer, their families, and the healthcare professionals who care for them.



For more information and to order Sharsheret publications, please e-mail [info@sharsheret.org](mailto:info@sharsheret.org) or call toll-free (866) 474-2774.

## Sharsheret Support Groups

Clinical Supervisor Shera Dubitsky, MEd, MA will introduce **Sharsheret Supports** to breast cancer support groups at the Bikur Cholim of Boro Park in **Brooklyn, New York**, May 6, 2009 and Jewish Family Service of Metrowest in **Florham Park, New Jersey**, May 14, 2009. Sharsheret Supports offers a Support Group Leader's Guide detailing step-by-step instructions on how to begin and sustain a culturally-sensitive breast cancer support group for Jewish women, a DVD introducing the unique concerns of Jewish women facing breast cancer, and the consulting services of a Sharsheret representative who can train local support group leaders or lead a sample support session.

For more information about bringing Sharsheret Supports to your community, please e-mail [info@sharsheret.org](mailto:info@sharsheret.org) or call toll-free (866) 474-2774.

## Get Connected During National Volunteer Month

Take action during **National Volunteer Month** and join Sharsheret's National Volunteer Program today! To download a registration form, please go to <http://www.sharsheret.org/library/VolunteerInformationForm.pdf>. Sharsheret's programs are powered by the energy of our volunteers and we look forward to your participation.

April is National Volunteer Month and Sharsheret would like to express our heartfelt gratitude to all of the volunteers who selflessly give their time to provide invaluable support for our programs and services on the national and local levels. National Volunteer Month is also the perfect time to join Sharsheret's **National Volunteer Program, Get Connected** with the community at large, and reach out to Jewish women facing breast cancer, healthcare professionals, community leaders, and college students who may not know about Sharsheret.

Through our National Volunteer Program, Sharsheret will match your skills with an appropriate volunteer opportunity. For more information about Sharsheret's National Volunteer Program, please contact Manager of Volunteer Services Rebecca Schwartz at [rschwartz@sharsheret.org](mailto:rschwartz@sharsheret.org).

## Bat/Bar Mitzvah Program

Many young adults preparing for their Bat and Bar Mitzvahs find it fulfilling to participate in or initiate a Mitzvah project, contributing to the community and helping others as they become Jewish adults. Sharsheret's **Bat/Bar Mitzvah Program** offers many exciting Mitzvah projects. Thank you to:

- Bat Mitzvah **Sydney Galligan** and Bar Mitzvah **Adam Schutzman** (Bellmore, New York) for creating and selling Bat and Bar Mitzvah cards in support of Sharsheret.
- Bat Mitzvah **Sydney Jensen** (Grayslake, Illinois) for creating and selling Chai note pins to benefit Sharsheret.

For more information about including Sharsheret in your Bat or Bar Mitzvah celebration, please contact Manager of Volunteer Services Rebecca Schwartz at [rschwartz@sharsheret.org](mailto:rschwartz@sharsheret.org).

## Sharsheret On Campus

Sharsheret is reaching out to students across the country in an effort to raise awareness about breast cancer. Educating college students about breast health and the impact of breast cancer on Jewish women will help to save lives, as young women learn about the importance of early detection. Go to <http://www.sharsheret.org/splashschool.php> to visit our **NEW campus outreach page!**

The next Sharsheret on Campus event, **Manicure for a Cure**, will be held at the Princeton University Hillel (Princeton, New Jersey), April 30 - May 1, 2009. For more information, please contact Brooks Yang at [brooksy@princeton.edu](mailto:brooksy@princeton.edu) or Liz Consky at [econsky@princeton.edu](mailto:econsky@princeton.edu).

Thank you to the many colleges, universities, high schools, and day schools who have hosted events nationwide in support of Sharsheret, including:

- Binghamton University Chabad, SDT and Alpha Phi Sororities (Binghamton, New York) **Fashion Show**.
- Emerson College AEPi Sorority (Boston, Massachusetts) **Ribbons on the Runway**.
- George Washington University AEPi Sorority (Washington, DC) **Candy Sale**.
- George Washington University AEPi Sorority and Hillel (Washington, DC) **Pink Shabbat**.
- Gratz College (Melrose Park, Pennsylvania) **Busy Box Toy Collection**.
- Magen David Yeshivah High School (Brooklyn, New York) **Fashion Show**.



- Massachusetts Institute of Technology AEPi Sorority (Cambridge, Massachusetts) **Phi Cup**.
- New York University Hillel (New York City) **Manicure for a Cure**.
- Ohio State University AEPi Sorority (Columbus, Ohio) **Basketball Tournament and Mark Make-Up Sale**.
- Ramaz Middle School Chessed Club (New York City) **Middle School Read-A-Thon**.
- Syracuse University AEPi Sorority (Syracuse, New York) **LF Stores Trunk Show**.
- Towson University (Towson, Maryland) **Manicure for the Cure**.
- Tufts University Hillel (Medford, Massachusetts) **Pump It For The Cure**.
- UCLA AEPi Sorority (Los Angeles, California) **Checker Challenge**.
- Yeshiva University, Stern College for Women Biology Club (New York City) **Candy Sale**.
- Yeshiva University, Stern College for Women Sy Syms School of Business Fashion Club (New York City) **Fashion Show**.



To bring Sharsheret to your school or to include Sharsheret in your organization's next event, please contact Project Manager Ellen Kleinhaus at [ekleinhaus@sharsheret.org](mailto:ekleinhaus@sharsheret.org).

## Sharsheret In The Healthcare Community



Director of Operations Elana Silber (pictured right with Lauren Carpiello, center, and Susan Liebskind) introduced Sharsheret at the NYU Langone Medical Center symposium, **BRCA 1 and BRCA 2: The Next Generation of Genetic Discovery**, at Temple Emanuel in Woodcliff Lake, New Jersey.

Sharsheret materials will be distributed at:

- Power of Pink **Breast Cancer Awareness Luncheon** and Pink Boutique, April 29, 2009, in Boca Raton, Florida. For more information, please e-mail [ThePowerofPinkFL@aol.com](mailto:ThePowerofPinkFL@aol.com).
- Body Designs Fitness Center of Paramus and Global Institute for Holistic Health **Health and Wellness** conference, May 2, 2009, in Paramus, New Jersey. For more information, please e-mail [membership@bodydesigns.net](mailto:membership@bodydesigns.net).
- Stowe Weekend of Hope **Health and Information Fair**, May 2, 2009, in Stowe, Vermont. For more information, please visit [www.stowehope.org](http://www.stowehope.org).
- Association of Jewish Family and Children's Agencies **Annual Conference**, May 3 - 5, 2009, in Chicago, Illinois. For more information, please e-mail [anniezeller@aol.com](mailto:anniezeller@aol.com).
- Breast Cancer Recovery **Infinite Boundaries** specialty retreats, May 28 - 31, 2009, in Eagle River, Wisconsin. For more information, please visit [www.bcrecovery.org](http://www.bcrecovery.org).
- Women at Risk **High-Risk Support Group**, May 13 and June 17, 2009, in New York City. For more information, please e-mail [lheld@womenatrisknyc.org](mailto:lheld@womenatrisknyc.org).

Sharsheret materials were recently distributed at:

- Genentech BioOncology **HerStory Patient Ambassador Events** in Santa Barbara, California and New York City.
- Susan G. Komen for the Cure **Educational Symposium** in Towson, Maryland.

To request Sharsheret materials for local conferences or events in your area, please contact Project Manager Ellen Kleinhaus at [ekleinhaus@sharsheret.org](mailto:ekleinhaus@sharsheret.org).

## Sharsheret In The Jewish Community

Clinical Supervisor Shera Dubitsky, MEd, MA will introduce Sharsheret at the Jewish Family and Children's Service of Greater Philadelphia Edna S. Tuttleman Symposium, **Tikvah (Hope): Jewish Women Facing Serious Illness: A Community Response**, Sunday, May 7, 2009 in Penn Valley, Pennsylvania. For more information, please visit [www.jfcsphilly.org](http://www.jfcsphilly.org).





Director of Operations Elana Silber (pictured center with students Beckie Cohen, left, and Sarah Mann) introduced Sharsheret and accepted a contribution from the **Ramaz Middle School Chess Club** in New York City.

Founder Rochelle Shoretz (pictured right with Magen David Director of Special Programming Charles Anteby and Manager of Volunteer Services Rebecca Schwartz) introduced Sharsheret at the Magen David Yeshivah High School **Fashion Show** in Brooklyn, New York.



Director of Operations Elana Silber (pictured center with event coordinators Aliza Berkowitz, left, and Ilana Sussman) introduced Sharsheret at the Yeshiva University, Stern College for Women Sy Syms School of Business Fashion Club **Fashion Show** in New York City.

Sharsheret materials will be distributed at:

- Emunah of America Five Towns Chapter and HAFTR Diane (Lieder) Taragin Women's Memorial **Exercise Emporium and Basketball Tournament**, May 3, 2009 in Lawrence, New York. For more information, please call (516) 410- 6639.
- Medstar **Living the Journey** event, May 11, 2009, in Brooklyn, New York. For more information, please call (718) 787-1800.
- Stamford JCC **Ruach Naor/Teen Tzedakah Mitzvah Fair**, May 17, 2009, in Stamford, Connecticut. For more information, please visit [www.stamfordjcc.org](http://www.stamfordjcc.org).
- Young Israel of Jamaica Estates Coalition for Israel Action **Walk for Israel**, May 25, 2009, in Jamaica Estates, New York. For more information, please e-mail [karenhje@aol.com](mailto:karenhje@aol.com).

Sharsheret materials were recently distributed at:

- Temple Beth El **Tikkun Olam Day** in Rochester, New York. Thank you to volunteer Jody Dietz (Rochester, New York), pictured right with Dr. Brett Shulman.
- JCC of Rockland County **Women's Health and Wellness Symposium** in West Nyack, New York. Thank you to volunteers **Baila Spielman** (Spring Valley, New York), **Rachelle Rosenberg** (Suffern, New York), and **Linda Perry** (Caldwell, New Jersey).
- UJA Federation of New York and JCC Association **Adult Health and Wellness Fair** in Washington Heights, New York. Thank you to volunteers **Sharon Wieder** (Teaneck, New Jersey) and **Baila Spielman** (Spring Valley, New York).



## Outreach Events



Outreach events are wonderful opportunities for Sharsheret to reach women in diverse communities and to raise funds to support our outreach efforts. Our most recent event was held on March 25, 2009 in **Rockville, Maryland**. Director of Operations Elana Silber (pictured center with event coordinators, left to right, Audrey Siegel, Lisa Charnoff, Lisa Mellman, and Nira Berry) introduced Sharsheret, discussed the effects of breast cancer in the Jewish community, and described the breast cancer programs Sharsheret offers nationwide. The event also featured "Genetic Testing for Hereditary

Breast and Ovarian Cancer: What Jewish Women Need to Know," a presentation by Beth Peshkin, Senior Genetic Counselor at Georgetown University, Lombardi Comprehensive Cancer Center. To view the slideshow from Beth Peshkin's presentation, please go to [http://www.sharsheret.org/images/parlormeetings/rockville-md-3-25-09/Sharsharet\\_Peshkin\\_Mar09.pps](http://www.sharsheret.org/images/parlormeetings/rockville-md-3-25-09/Sharsharet_Peshkin_Mar09.pps).

Our next event will be held in October 2009 in **Chicago, Illinois**. For more information about hosting an outreach event in your community, please e-mail [events@sharsheret.org](mailto:events@sharsheret.org) or call toll-free (866) 474-2774.

## Sharsheret In The News

Articles and news segments about Sharsheret have recently appeared in:

- [The Towerlight Online \(February 11, 2009\)](#)
- [Alpha Epsilon Phi Columns \(February 20, 2009\)](#)
- [CBS News \(February 26, 2009\)](#)
- [WBNG News \(March 15, 2009\)](#)
- [The Tufts Daily \(March 31, 2009\)](#)

Since the organization's founding in November 2001, Sharsheret has been featured in more than 150 publications nationwide, including **USA Today** and the **Wall Street Journal**.

## Support Sharsheret

Thank you to [Lasko Family Kosher Tours](#) (Davie, Florida) for donating proceeds from the Passover aliyot auctions at the JW Marriott Desert Ridge Resort and Spa in Phoenix, Arizona and the PGA National Resort and Spa in Palm Beach Gardens, Florida.



The **Robin Taback Memorial Music Fund**, will donate a portion of the proceeds from the sale of "Remembering Robin" CDs to Sharsheret. The music for the ten melodies featured on the CD was composed by Robin Taback, of blessed memory. The lyrics, other than the liturgical prayers, were also written by Robin. To order a CD today, please visit [www.robintaback.com](http://www.robintaback.com).

For information about Sharsheret corporate partnerships, please e-mail [info@sharsheret.org](mailto:info@sharsheret.org) or call toll-free (866) 474-2774.

Sharsheret Updates are distributed bi-monthly and archived in the Newsletters section of our website, [www.sharsheret.org](http://www.sharsheret.org). To join our mailing list, [click here](#).

### [Forward email](#)

### [SafeUnsubscribe®](#)

This email was sent to [mlovy@sharsheret.org](mailto:mlovy@sharsheret.org) by [info@sharsheret.org](mailto:info@sharsheret.org).  
[Update Profile/Email Address](#) | Instant removal with [SafeUnsubscribe™](#) | [Privacy Policy](#).

Email Marketing by

